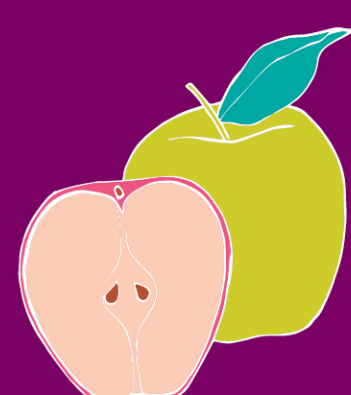
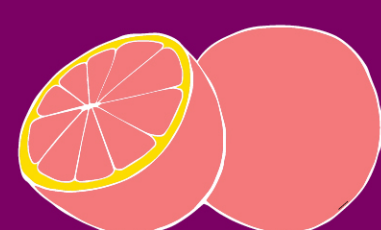




HOW SWEET IS GERMAN



Apfel



Grapefruit



Schokolade



Dessert



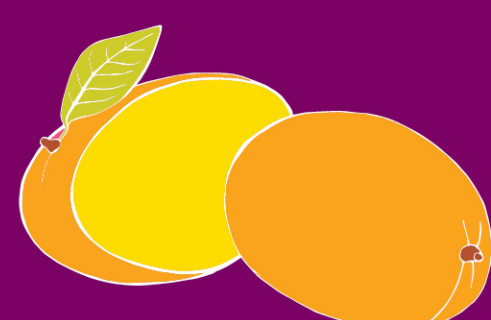
Honig



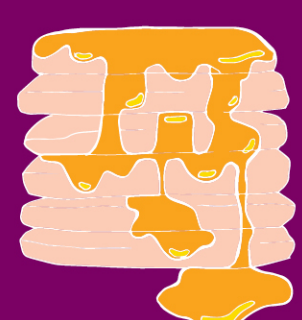
Cocktail



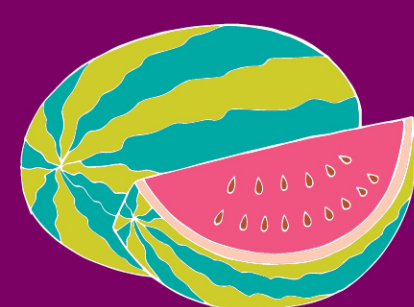
Joghurt



Mango



Waffeln



Wassermelone



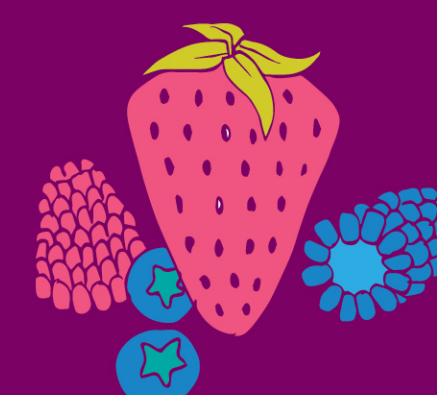
Tee



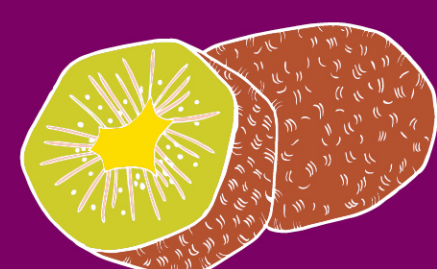
Kokosnuss



Banane



Beeren



Kiwi



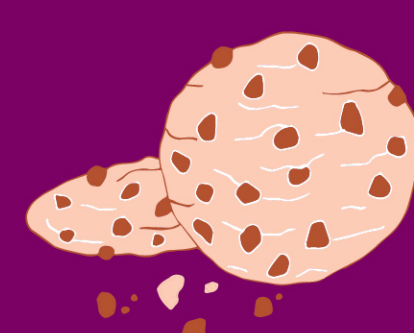
Müsli



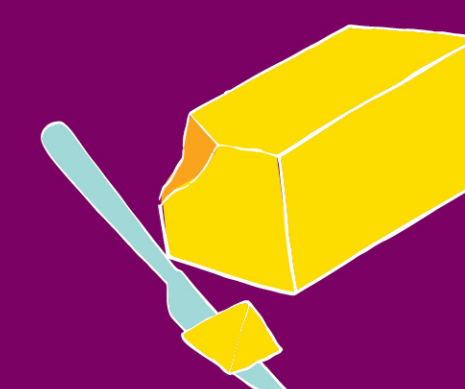
Eiscreme



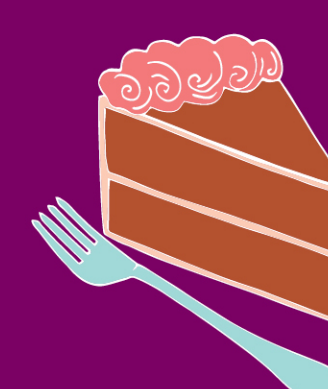
Marmelade



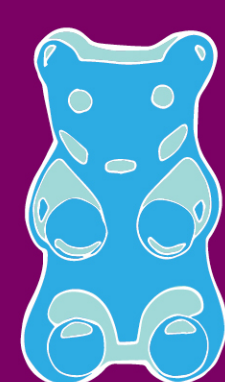
Keks



Butter



Torte



Gummibär



Spekulatius



Kaffee



Gelee



Bonbon



Ananas



Karamel